

CORPORATE HEALTH BULLETIN

THE **PRINCESS GRACE** HOSPITAL

The Wellington Hospital

London Bridge Hospital

THE **LISTER** HOSPITAL
chelsea

The Portland Hospital
for Women and Children

THE HARLEY STREET CLINIC



The Portland Hospital launches maternity scheme

The Portland Hospital is launching a new maternity care package for employers in London. The package offers discounted maternity services when paid for by the employee. Companies can extend the offer to any of their employees who want the option of attending a private facility to have their baby even if their private medical insurance does not cover this.

The scheme will allow individuals the opportunity to self-pay for their maternity at a reduced corporate rate. Discounts are also available across The Portland Hospital's women's health and paediatric services.

Tailor-made schemes will be designed for employers around the existing private medical insurance policies, which often make only limited provision for maternity.

Louise Humphreys, marketing manager at The Portland, said, "We're expecting a lot of interest in the new service, particularly from City-based firms."

"Women who start families in their 30s often have the financial resources to pay to have their baby in an environment of their choice and where they can plan their ante-natal checks to fit around their work and lifestyles."

MATERNITY BENEFITS WOULD NORMALLY FALL OUTSIDE ANY INSURED PRODUCT AND THE DISCOUNTS OR SERVICES THAT WE OFFER WOULD BE VIEWED AS AN ADDITIONAL BENEFIT TO STAFF AND FAMILIES, WITH NO COST TO THE EMPLOYER.

THE MATERNITY PACKAGE IN BRIEF

DISCOUNTS APPLY TO ALL SELF-PAY SERVICES, INCLUDING MATERNITY, GYNAECOLOGY AND PAEDIATRIC INPATIENT AND OUTPATIENT CARE. CONSULTANT CHARGES ARE NOT INCLUDED. OTHER SERVICES INCLUDE WEB LINKS, CUSTOMISED LITERATURE, SEMINARS AND OPEN DAYS.



▶ For information about the scheme contact **David Hall** on **020 7616 4848**

Private medical insurance and caesarean sections - avoiding the complications

TRADITIONALLY, PRIVATE MEDICAL INSURANCE POLICIES HAVE ONLY COVERED THE COST OF DELIVERY BY CAESAREAN SECTION IF 'MEDICALLY NECESSARY OR AS A RESULT OF COMPLICATIONS'.

The insurance broker, Elliott Hurst, Watson Wyatt Historically, delivery by caesarean section has been covered by most medical plan programmes if the delivery was deemed to be medically necessary.

More recently, some private medical insurers (and employers) have taken the view that all deliveries by caesarean section are to be excluded from coverage, irrespective of the clinical need (or otherwise) for delivery in this manner. Such decisions have generally been based on the increasing difficulties that claims assessors have experienced when seeking to confirm whether the delivery by caesarean section was clinically necessary or whether this method of childbirth was for non-clinical reasons.

Employers should carefully consider the consequences of either including or excluding caesarean sections from coverage before making any plan design changes. Such considerations might include both clinical and financing perspectives - the latter particularly considering the position relating to any potential taxable benefit that might arise as a result of the employer assisting in either partially, or fully, funding delivery by caesarean section.

The consultant, Joseph Iskaros

Half of all deliveries last year at the Portland were natural deliveries and of the caesareans, only around 7.5% were planned. There will, of course, always be emergencies, but we keep these to a minimum by close monitoring and a consultant-led care plan.

Even if planning a normal delivery, we recommend that women discuss with their insurer if they will be covered for medical care in the event of complications for themselves and their baby. Contact HCA International on 020 7616 4848 for more information.



Europe's largest private cancer treatment centre

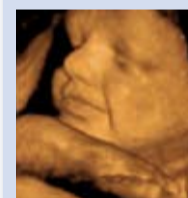
The Harley Street Clinic is to manage a new private patients' unit at University College London Hospital (UCLH) to provide specialist treatment for cancers of the blood and bone. As one of the leading cancer hospital networks in the private sector, HCA was the partner of choice for this groundbreaking NHS venture.

UCLH Trust Chief Executive, Robert Naylor said "This scheme will bring together the most experienced clinical haematology teams in London to create one of the largest centres for this type of cancer treatment in Europe."

The new 24-bed unit at UCLH will complete the range of cancer treatments and options available to private patients across HCA hospitals in London.

University College London Hospitals 
NHS Foundation Trust

Picture perfect with new 4-D technology



New 4-dimensional ultrasound machines at The Portland Hospital give the clearest pictures yet of a developing baby.

Used to monitor the development of the pregnancy, the images provide clinicians with a more detailed anatomical scan than conventional ultrasound.

They can also be used for the detection and treatment of gynaecological conditions including fertility investigations.

Did you know?

The Portland may be the largest private maternity hospital in the UK, but it is far more than just the birth place of the rich and famous.

It is also the largest private children's hospital in London working with leading NHS consultants and pioneering specialist treatments such as cochlea implants, spinal, limb and hand surgery.

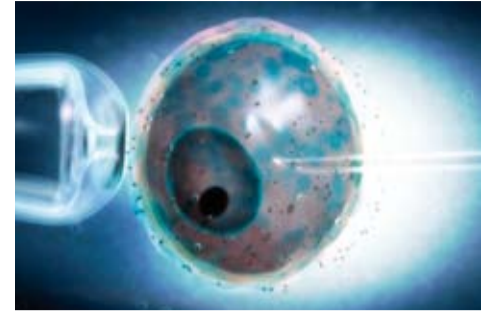




IVF success rises at the Lister

THE LISTER FERTILITY CLINIC IS WIDELY RECOGNISED AS ONE OF THE LEADING FERTILITY CENTRES IN THE UK AND TREATS AROUND 1,000 COUPLES EACH YEAR.

CLINICAL DIRECTOR, HOSSAM ABDALLA, EXPLAINS THEIR RECENT SUCCESSES AT THE UNIT AND HOW ADVANCES IN MEDICAL TECHNOLOGY ARE HELPING TO IMPROVE BIRTH RATES IN OLDER WOMEN.



Infertility is the commonest reason for women aged 20-45 to visit their GP (after pregnancy itself). It affects one in seven couples of which a significant minority will be unable to conceive naturally.

Many fertility problems can now be overcome with the advances in medical science. IVF – in vitro fertilisation – is the most widely practised and recognised of these.

UK vs Europe

Across Europe, IVF treatment is soaring and last year in the UK more than 36,000 cycles or treatments were completed, placing the UK third behind Germany and France.*

Although the Government now promises one cycle of IVF to every couple with 'appropriate clinical need', more than three quarters of treatments are carried out privately and paid for by the individuals.

*Source: Human Fertilisation and Embryology Authority

Improved birth rates

Improvements to our laboratory have led to a significant improvement in the quality of embryos we are collecting for our patients. This means that we are able to be far more selective about the choice of embryo and be more likely to choose the 'best embryo' for transfer.

Pre-implantation genetic screening

PGS is a new technique which enables us to detect chromosomal abnormalities prior to treatment. Some of these abnormalities cause failure of implantation following repeated IVF cycles or miscarriages, so by screening for these we only transfer the embryos which have the greatest chance of success. At our clinic this has led to an increase in the birth rate, particularly of women over 40.

We can also use PGS to detect conditions such as Down's Syndrome which is more prevalent in older women.

Embryo transfer policy

We are now giving our patients under the age of 40 a choice to have only one or two embryos transferred. Multiple births (twins and triplets) have always been one of the side effects of IVF and the risks of premature birth are increased. However, because we are improving the way in which we identify 'good' embryos we are increasingly confident that we can achieve a pregnancy without having to transfer too many.

The Lister Hospital has helped many couples who have been unable to achieve successful treatment elsewhere. You can talk to the IVF team at The Lister in confidence on 020 7730 5932.



The right time to start a family

The fertility rate of women aged 30-34 is now higher than for women aged 25-29 and increasingly women are waiting until their 30s or even 40s before starting a family. (Source: Birth Statistics 2004: Office for National Statistics) At The Portland Hospital, the leading private maternity hospital in London, 75% of mothers are in their early to late 30's.

The whole fabric of society is pushing this age up; pressure of work; more demanding lifestyles and the complexity of modern relationships combine to change the age profile of motherhood. As a consequence, there have been significant improvements in obstetric medicine and increased emphasis on the quality of ante-natal care.

According to Joseph Iskaros, consultant obstetrician at The Portland Hospital, the last 10 years have seen a shift in the age profile of new mothers attending clinics with almost the majority now in their late 30s to 40s. But in spite of this, the outcome for mother and baby is better than ever.

Mr Iskaros comments "These are healthy women who are barely midway through their lives and it is a perfectly reasonable time for them to choose to start a family. With good ante-natal care a woman of 40 should expect a perfectly normal pregnancy. Additional screening will be recommended as there is a slightly increased risk of conditions such as Down's Syndrome."

At The Portland Hospital, all patients are offered genetic testing in early pregnancy as well as very detailed anatomical scans at about 20-25 weeks.

Patients also have the option of consultant-led maternity care. This means that they see the same person for the whole pregnancy, so problems are picked up early and there is plenty of opportunity to discuss any concerns, treatments and options available.



NORMANDIE KEITH, CELEBRITY BEAUTY EDITOR OF YOU MAGAZINE SAYS ...

"THERE IS NOWHERE IN THE WORLD I WOULD RATHER HAVE TREATMENT FOR IVF THAN AT THE LISTER CLINIC. DR ABDALLA AND HIS TEAM ARE TIRELESS IN THEIR SUPPORT, NURTURE AND MEDICAL EXPERTISE. EVERY STEP OF THE WAY I FELT CARED FOR, INFORMED, AND IN THE BEST POSSIBLE HANDS. THE LISTER IVF UNIT REALLY DOES MAKE MIRACLES HAPPEN AND OUR SON, FINN, WAS BORN ON JANUARY 2ND TO THE MOST GRATEFUL AND HUMBLE PARENTS."

Employee health services in London

Summer 2006 events programme

We are now offering a series of presentations covering some of our most requested health services. Our 30-minute presentations are designed to tell employers how to access these services in London either directly or via their private medical insurance provider.

Breast screening

Breast screening programmes and One-stop Breast Clinics.

Men's health screening

Including Prostate Cancer Awareness and heart checks.

Maternity cover

Maternity cover and private options for employees. IVF treatments and success rates.

Outpatients in the City

One-stop clinics and treatments at 31 Old Broad Street, EC1.

Managed healthcare

How shared data from hospitals, insurers, brokers and corporates could reduce the cost of employee health insurance.

HCA is the leading private hospital group in London with 3,000 consultants working privately at our six hospitals and one-stop clinics in the West End, City and Docklands.

HCA hospitals are recognised by major insurers. Corporate rates and bespoke packages are also available.

To book a presentation about one of the above services, please email hca@wallacehcl.co.uk



HCA-Connect, the central information and appointment service for the six HCA hospitals, provides GPs and patients with names of relevant specialists nearest to them with clinic times and will also make the appointment if required. Each of our HCA hospitals in London provides some or all of the services featured in this issue of *Corporate Health Bulletin*.

